

ORDERING INFORMATION

Order code: 58985
 Description: FC8T9/WW/RS/4P/STD
 UPC: 69549589858
 Case quantity: 12

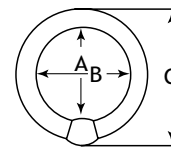


Nominal diameter : 8 in. (210 mm) Dia. : 1 3/16 in. (30 mm)

PERFORMANCE DATA

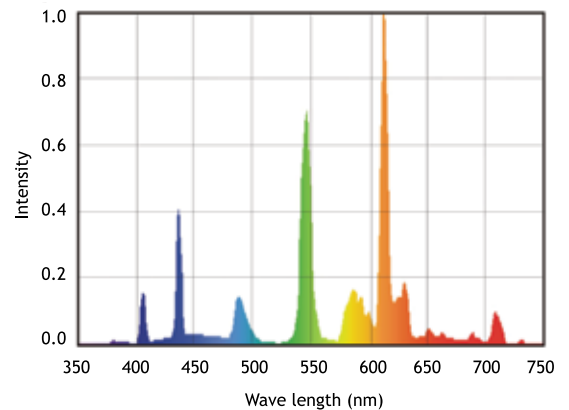
Shape: T9
 Base: G10q-4
 Starting method: Rapid Start (RS)
 Wattage (W): 22
 Colour temperature (K): 3 000
 CRI: 82
 Rated life on IS¹ ballast: 10 000
 Based on a 3 hour start
 Initial lumens (lm): 1 450
 Mean lumens (lm): 1 380
 Nominal efficiency (lm/W): 66
 TCLP compliant: Yes
 Phosphor composition: Triphosphor
 Nominal lamp operating frequency (Hz): 60
² Minimum starting temperature (°C): -10

DIMENSIONS



A Max	B Min / Max	C Max
Inner diameter from base to tube	Inner diameter from tube to tube	Outer overall diameter from base to tube
6.06 in. 154.0 mm	5.82 in./ 11.91 in. 148.0 mm/ 153.0 mm	8.28 in./ 210.5 mm

SPECTRAL DISTRIBUTION



¹ The life rating indicated is based on 3 hour burning cycles under specified conditions and with ballast meeting ANSI specifications.

² The minimum starting temperature is a function of the ballast. The minimum starting temperature is based on a STANDARD brand T9 Circline ballast.

