

## ORDERING INFORMATION

Order code: 58982  
 Description: FC8T9/DL/RS/4P/STD  
 UPC: 69549589827  
 Case quantity: 24

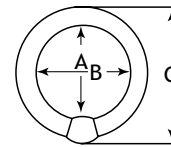


Nominal diameter : 8 in. (210 mm) Dia. : 1 3/16 in. (30 mm)

## PERFORMANCE DATA

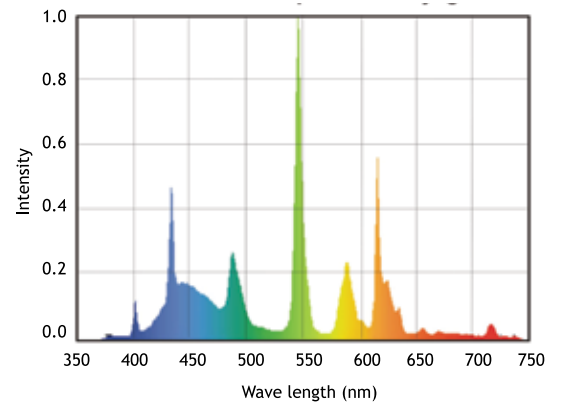
Shape: T9  
 Base: G10q-4  
 Starting method: Rapid Start (RS)  
 Wattage (W): 22  
 Colour temperature (K): 6 500  
 CRI: 82  
 Rated life on IS<sup>1</sup> ballast:  
     Based on a 3 hour start 10 000  
 Initial lumens (lm): 1 210  
 Mean lumens (lm): 1 150  
 Nominal efficiency (lm/W): 55  
 TCLP compliant: Yes  
 Phosphor composition: Triphosphor  
 Nominal lamp operating frequency (Hz): 60  
<sup>2</sup> Minimum starting temperature (°C): -10

## DIMENSIONS



A Max	B Min / Max	C Max
Inner diameter from base to tube	Inner diameter from tube to tube	Outer overall diameter from base to tube
6.06 in. 154.0 mm	5.82 in./ 11.91 in. 148.0 mm/ 153.0 mm	8.28 in./ 210.5 mm

## SPECTRAL DISTRIBUTION



<sup>1</sup> The life rating indicated is based on 3 hour burning cycles under specified conditions and with ballast meeting ANSI specifications.

<sup>2</sup> The minimum starting temperature is a function of the ballast. The minimum starting temperature is based on a STANDARD brand T9 Circline ballast.

