

ORDERING INFORMATION

Order code: 58988
 Description: FC16T9/CW/RS/4P/STD
 UPC: 69549589889
 Case quantity: 24

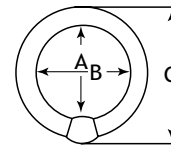


Nominal diameter : 16 in. (406 mm) Dia. : 1 3/16 in. (30 mm)

PERFORMANCE DATA

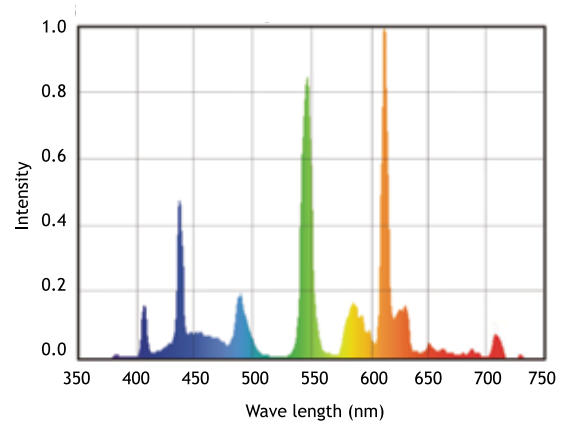
Shape: T9
 Base: G10q-4
 Starting method: Rapid Start (RS)
 Wattage (W): 40
 Colour temperature (K): 4 100
 CRI: 82
 Rated life on IS¹ ballast: 10 000
 Based on a 3 hour start
 Initial lumens (lm): 3 150
 Mean lumens (lm): 3 000
 Nominal efficiency (lm/W): 79
 TCLP compliant: Yes
 Phosphor composition: Triphosphor
 Nominal lamp operating frequency (Hz): 60
² Minimum starting temperature (°C): -10

DIMENSIONS



A Max	B Min/B Max	C Max
Inner diameter from base to tube	Inner diameter from tube to tube	Outer overall diameter from base to tube
13.68 in. 347.5 mm	13.32 in./ 13.6 in. 338.5 mm/ 345.5 mm	15.88 in./ 403.5 mm

SPECTRAL DISTRIBUTION



¹ The life rating indicated is based on 3 hour burning cycles under specified conditions and with ballast meeting ANSI specifications.

² The minimum starting temperature is a function of the ballast. The minimum starting temperature is based on a STANDARD brand T9 Circline ballast.

