

# Technical Information Bulletin Fluorescent

# E-Lume™

## ORDERING INFORMATION

Order code: 56517  
 Description: FC12T9/CW/RS/4P/ELUME  
 UPC: 69549565173  
 Case quantity: 24

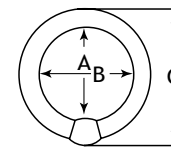


Nominal diameter : 12 in. (305 mm) Dia. : 1 1/2 in. (29.5 mm)

## PERFORMANCE DATA

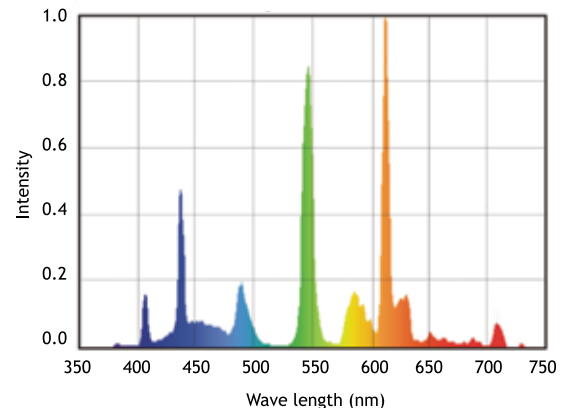
Shape: T9  
 Base: 4 pin  
 Starting method: Rapid Start (RS)  
 Wattage (W): 32  
 Colour temperature (K): 4 100  
 CRI: 85  
 Rated life on IS<sup>1</sup> ballast:  
     Based on a 3 hour start 6 000  
 Initial lumens (lm): 1 570  
 Mean lumens (lm): 1 495  
 Nominal efficiency (lm/W): 49  
 TCLP compliant: Yes  
 Phosphor composition: Triphosphor  
 Nominal lamp operating frequency (Hz): 60  
<sup>2</sup> Minimum starting temperature (°C): -10

## DIMENSIONS



A Max	B Min / Max	C Max
Inner diameter from base to tube	Inner diameter from tube to tube	Outer overall diameter from base to tube
9.64 in. 245.0 mm	9.42 in./ 9.54 in. 237.5 mm/ 242.5 mm	11.83 in./ 300.5 mm

## SPECTRAL DISTRIBUTION



<sup>1</sup> The life rating indicated is based on 3 hour burning cycles under specified conditions and with ballast meeting ANSI specifications.

<sup>2</sup> The minimum starting temperature is a function of the ballast. The minimum starting temperature is based on a STANDARD brand T9 Circline ballast.

