

## ORDERING INFORMATION

Order code: 31177  
 Description: BMH0400/TRITAP/REM/CWA/H/STD  
 UPC: 69549311770



## SPECIFICATIONS

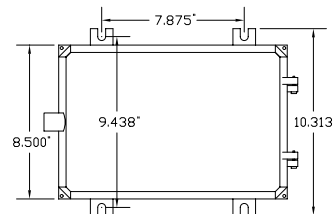
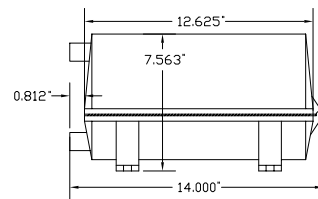
Ballast type: Magnetic metal halide  
 Ballast style: Remote  
 Circuit type: CWA  
 ANSI code: M59  
 Input voltage (V): 120/277/347  
 Input frequency (Hz): 60  
 Line volt regulation:  $\pm 10\%$   
 Line watt regulation:  $\pm 10\%$   
 Insulation class: H (180°)



Input voltage (V)	Operating current (A)	Open circuit current (A)	Starting current (A)	Rated lamp watts (W)	Input watts (W)	OCV (V)	Dropout voltage (V)	UL 1029 code	Fuse rating (A)	Input current (A)	Power factor	Starting temperature
120	4.00	3.50	2.90	400	458	300	60	B	10	2.50 - 3.10	0.90	-20°F / -30°C
277	1.70	1.60	1.30	400	458	300	140	D	5	1.05 - 1.40	0.90	-20°F / -30°C
347	1.40	1.30	1.00	400	458	300	175	D	4	0.85 - 1.10	0.90	-20°F / -30°C

## HIGH POTENTIAL TEST (V)

1 minute:	2 000
2 seconds:	2 500
OCV test:	270 - 330
Short circuit:	3.40 - 4.20



Note: Ballast components are mounted on a removable tray allowing for quick field service.